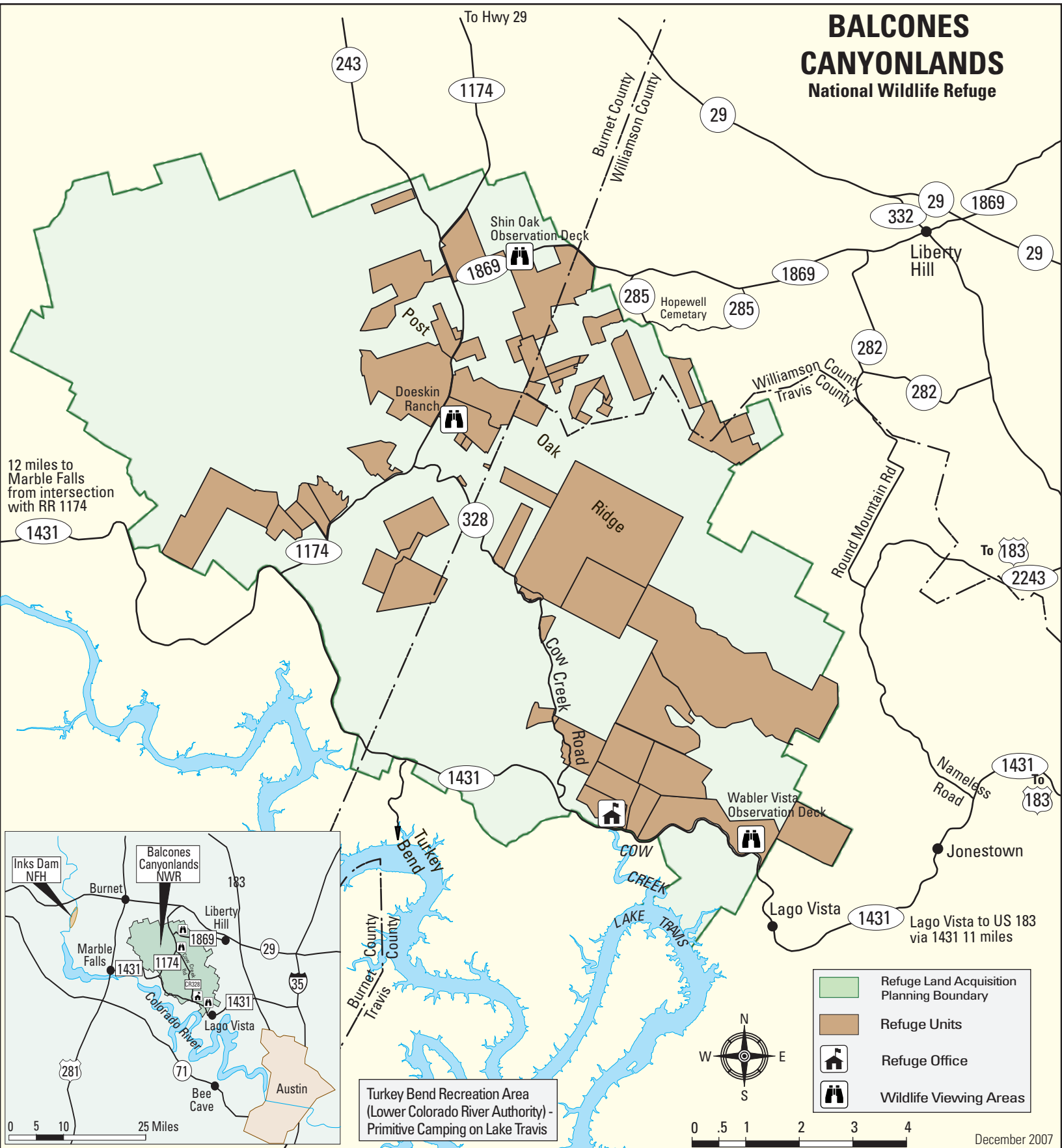


BALCONES CANYONLANDS

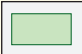
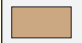


National Wildlife Refuge



12 miles to Marble Falls from intersection with RR 1174

Turkey Bend Recreation Area (Lower Colorado River Authority) - Primitive Camping on Lake Travis

Lago Vista to US 183 via 1431 11 miles

-  Refuge Land Acquisition Planning Boundary
-  Refuge Units
-  Refuge Office
-  Wildlife Viewing Areas